

SCHÜCO

# Schüco Perfect

The complete solution  
for every opening  
in the building structure.



# Combined expertise

The Schüco Perfect product is the result of the successful collaboration between Schüco and G.S. Stemeseder GmbH. Schüco window and sliding units are combined and custom-fitted with the patented Perfect system developed by Stemeseder to form a fully integrated unit. This combines the opening unit, safety barrier, sun shading and flyscreen, as well as the window sill or threshold, in a completely new way. As a result, the well-known interface problems between trades in the wall opening are resolved with impressive technical and visual precision.



The Schüco Perfect AWS 75.SI+ window system as well as the Schüco Perfect ASE 80.HI and the Schüco Perfect ASE 60 sliding and lift-and-slide systems were developed based on tried-and-tested Schüco systems. The basic profiles of the basic series have been adapted to include a functional groove in the outer shell for an excellent connection to the Perfect system from Stemeseder. This offers a simple, secure and attractive integration of opening units in a complete solution: Schüco Perfect.

Design options for the window system

Schüco AWS 75.SI+ Perfect



Schüco Perfect.

One system,  
many  
advantages.

# Schüco Perfect statements

## Architect

“The installation of the Schüco Perfect system increases efficiency when it comes to the holistic planning of windows. We save time by eliminating the need to research other products. The system combines all of the important window components – be it a sun shading roller shutter, a pleated blind or a flyscreen – and it is also compatible with TipTronic.”



Arthur Hildebrandt (archwerk GmbH)

## Architects and fabricators

“Schüco Perfect is the right product to economically increase the value of a building for the long term. As the system is extremely flexible in terms of function, a roller blind can be replaced with an external blind for example, or vice versa. The functions of the building are therefore virtually unlimited.”



Thomas Stemeseder (G.S. Stemeseder GmbH)

“Schüco Perfect is an everything-from-a-single-source solution. It can be pre-configured in the workshop and easily assembled on site. The client also benefits from a uniform appearance, as the colours of the additional components match the windows perfectly.”



Rüdiger Sander (FTF Sander GmbH)

## Fabricators

“The Perfect module is a real game changer for the transformation of the construction industry. Challenges for metal fabricators have become more prevalent in recent years. Construction scenarios are becoming more and more complex, but they can be made considerably more simple again with Schüco Perfect. The product allows us to build in a more serial, modular and cost-effective manner, and to benefit from the advantages in production and installation.”



Bastian Timm (Hans Timm Fensterbau)

“Schüco Perfect combines all of the window components in a type of modular system. This enables us to complete construction projects more quickly.”



Marcel Neubauer (Boetker Metall + Glas GmbH & Co. KG/Neubauer Fassaden GmbH)

“Schüco Perfect is an everything-from-a-single-source solution.”

“Schüco Perfect combines all of the interfaces. For me, that is the huge advantage of the system. It allows me to personally offer a window with a window sill attachment and all the other components. Thanks to the modular design, I can install the right windows for my customer without any additional interfaces and offer them everything from a single source.”

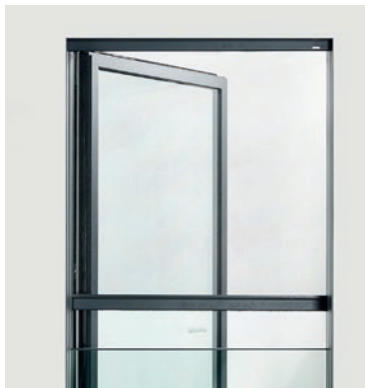


Steffen Grave (Hilgefort & Götting, Metall- und Fensterbau)

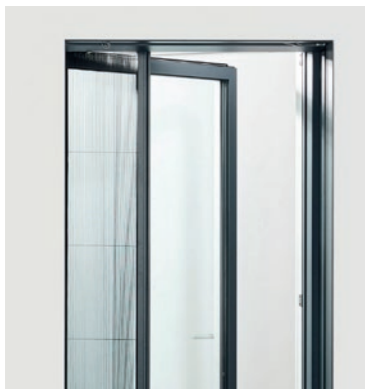
# Product portfolio

## Flyscreen

Whether in living rooms, bedrooms or home offices, efficient flyscreens on windows and doors reliably keep out mosquitoes, flies, wasps and other pests – providing added user comfort, especially in the warmer months of the year. Undisturbed ventilation is therefore possible at all times of the day and night. Schüco Perfect provides flyscreens either as vertical roller blinds or as horizontal sliding pleated blinds, equipped with highly tear-resistant fibre glass fabric allowing a clear view to the outside and excellent air circulation.



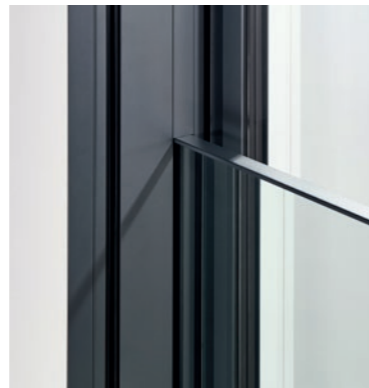
Vertical roller blind



Horizontal sliding pleated blind

## Safety barrier

Bright, airy spaces with floor-to-ceiling opening units remain very much on trend. Therefore, maximum transparency when it comes to safety barriers too is important to architects and clients. Schüco Perfect provides completely transparent spandrel glazing, offering excellent safety and integrating itself so that it is almost completely concealed within the façade design, for an uninterrupted view to the outside. There is also the option for the safety barrier to be designed as a bar safety barrier.



Spandrel glazing

## Sun shading

External sun shading meets various functional and creative requirements within residential and commercial construction. Schüco Perfect offers three options for this: an external blind with Z or C-shaped louvre blades for targeted light and heat deflection in the room, roller shutters for excellent darkening of the room, and the high-quality textile sun shading Zip Design Screen. Louvre blades, textile fabric and construction component surfaces of the Schüco Perfect system units can be designed in the same uniform colour scheme.



External blind



Roller shutters



Zip Design Screen

## Sills

Perfect appearance and maximum functionality: with the feature window sill for external and barrier-free thresholds with a drainage channel, Schüco Perfect offers more reliable solutions for the interface points between trades in the wall opening – all without the otherwise necessary planning work. The integrated standard-compliant drainage guarantees increased system reliability and the best possible user comfort for window and sliding units.



Feature window sill



Level threshold



20 mm threshold

## Technical data

Properties	SCREENTEC FIBREGLASS
Colour	Black
Thickness	0.28 mm
Open area	59 %
Mesh size	1117 x 1371 mm

Glass composition	Width		Height	
	Minimum	Maximum	Minimum	Maximum
17.5 mm laminated safety glass	500 mm	2750 mm	280 mm	N/A
25.5 mm laminated safety glass	500 mm	4000 mm	280 mm	N/A

## So simple, so Schüco Perfect

## “Attractive. Reliable. Efficient. And all from a single source.”

Within the context of the construction process, “everything from a single source” means simplified planning with less work and increased reliability with regard to fabrication and installation thanks to a tested modular system.



### Flexible and modular

- Whether it's sun shading, flyscreens, safety barriers, window sills, or thresholds: all of the components can be individually combined
- All of the systems can be adjusted, upgraded and replaced, meaning that in the event of a conversion, an external blind could be exchanged for a roller shutter, for example

### Planning reliability

- Patented drainage end cap bridges all the gaps between trades
- Cross-trade and 100% interface-secure
- Identical attachment details for different designs
- The installation time for the Perfect 190 system is around ten minutes thanks to the system being prepared and pre-fabricated

### Attractive

- The same colour scheme for all of the components ensures a uniform and stylish appearance
- Uniquely slim face widths and maximum glass surfaces
- No visible screws in the guide tracks or the window sill

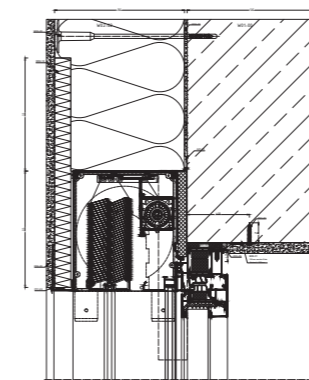
### Effective and cost efficient

- Reduced planning work and simplified process due to everything being consolidated into one system or one trade

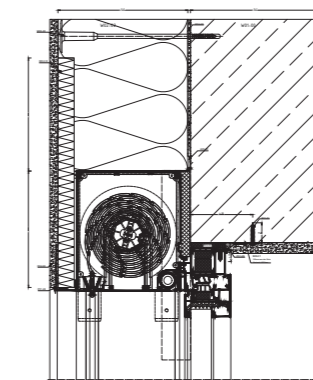
# Schüco Perfect – combine, change, extend

# Installation options

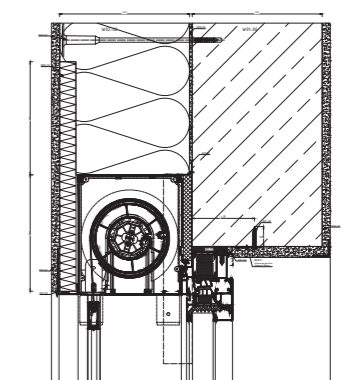
Uniform attachments mean less planning work: windows and sliding units from Schüco guarantee the same installation scenario every single time. The fact that the external attachment is identical for every installation version means that the installation of Schüco Perfect is simplified considerably.



External blind with pleated blind (flyscreen)



Roller shutters with roller blind (flyscreen)



ZIP screen (without flyscreen)



Schüco Perfect.

Simply  
more versatile.

Flyscreen



Safety  
barrier



Sliding system



Sun shading



Window system



Window sill





# Technical information

Schüco Perfect AWS 75.SI+ window system



Schüco systems

Schüco AWS 75.SI+ Perfect

## Dimensions

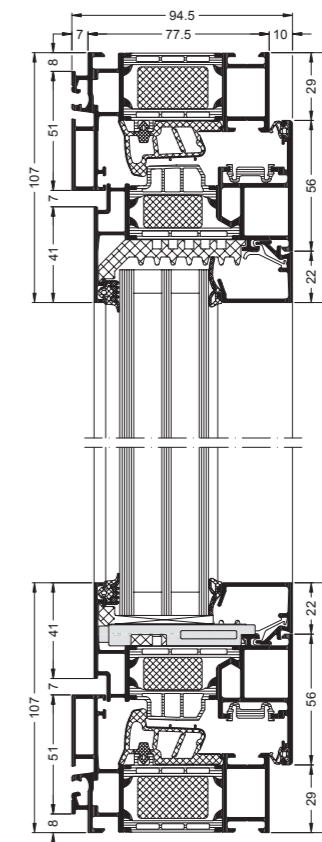
Basic depth of outer frame	75 mm
Face width (vent joint)	91 mm
Maximum vent height	2500 mm
Maximum vent width	1700 mm
Maximum vent weight	250 kg
Maximum glass or infill thickness of the vent frame	61 mm

## Tests and standards

Thermal insulation in accordance with DIN EN ISO 10077-2	$U_f$ value of 0.90 W/(m <sup>2</sup> K) to 1.6 W/(m <sup>2</sup> K)
Sound insulation in accordance with DIN EN ISO 140-3	$R_w$ values up to 48 dB
Burglar resistance in accordance with DIN V ENV 1627 (DIN EN 1627)	Class WK3 (RC 3)
Air permeability in accordance with DIN EN 12207	Class 4
Watertightness in accordance with DIN EN 12208	Class 9A
Wind load resistance in accordance with DIN EN 12210 *	Class C5/B5
Operating forces in accordance with DIN EN 13115	Class 4
Resistance to repeated opening and closing in accordance with DIN EN 12400	Class 3

## Vertical section through the opening unit

Face-fitted vent



# Technical information

Schüco sliding and lift-and-slide system



## Schüco systems

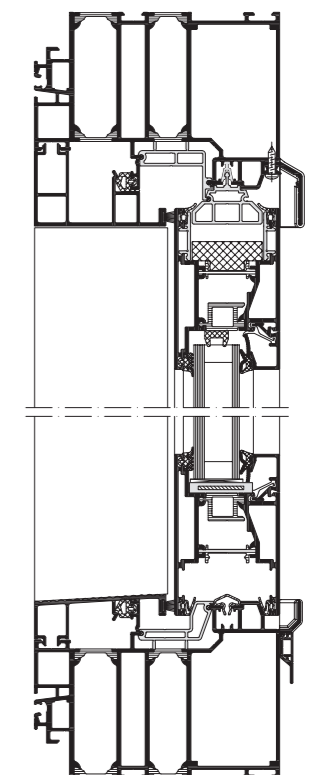
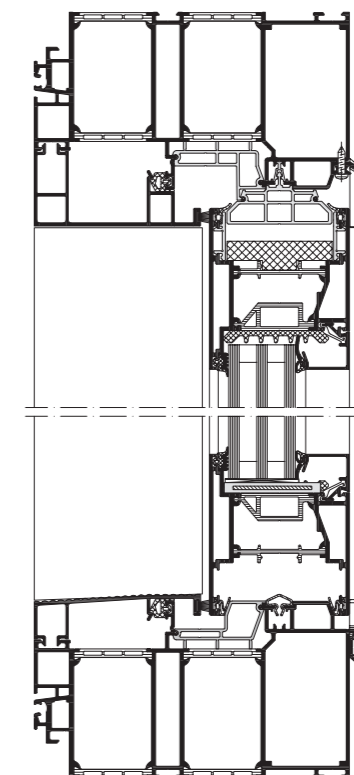
Schüco  
ASE 80.HI Perfect

Schüco  
Perfect ASE 60

Dimensions	Schüco ASE 80.HI Perfect	Schüco Perfect ASE 60
Basic depth of outer frame	80 mm	60 mm
Face width (vent joint)	82 mm	82 mm
Maximum vent height	3500 mm	3500 mm
Maximum vent width	3500 mm	3500 mm
Maximum vent weight	500 kg	500 kg
Maximum glass or infill thickness of the vent frame	60 mm	40 mm
Tests and 80 mm standards		
Wind load resistance in accordance with DIN EN 12210 */**	Class C5/B5	Class C5/B5
Watertightness in accordance with DIN EN 12208 **/**	Class E900	Class E900
Air permeability in accordance with DIN EN 12207 **	Class 4	Class 4
Operating forces in accordance with DIN EN 13115 **	Class 1	Class 1
Burglar resistance up to class RC 2 in accordance with DIN EN 1627 **	Class RC 2	Class RC 2
Resistance to repeated opening and closing in accordance with DIN EN 12400 **	On request	On request
Thermal insulation in accordance with DIN EN ISO 10077-2 **	$U_w$ value of 1.1 W/(m <sup>2</sup> K), $U_f$ values from 1.8 W/(m <sup>2</sup> K)	$U_w$ value of 1.1 W/(m <sup>2</sup> K), $U_f$ values from 1.8 W/(m <sup>2</sup> K)
Corrosion protection in accordance with DIN EN 1670 **	Class 4	Class 4

ASE 80.HI Perfect

Perfect ASE 60

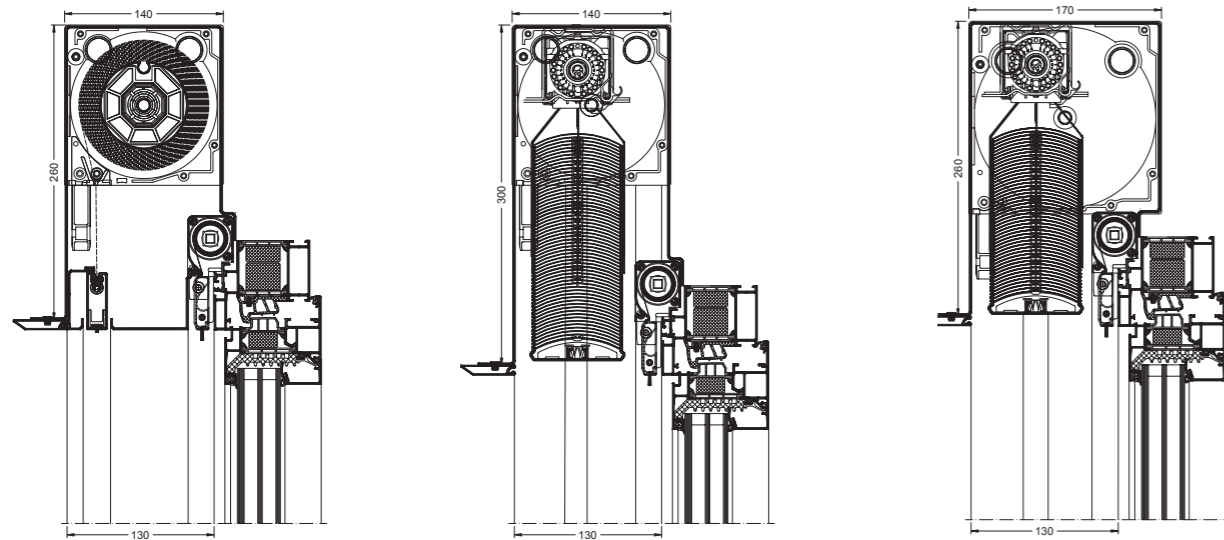


- \* The amount of deflection will depend on the profile
- \*\* Design-specific (see test certificate)
- \*\*\* Applies to lift-and-slide system

# System overview

## Perfect 130 system

The Perfect 130 system boasts a system basic depth of only 130 mm and can therefore be integrated into very thin wall constructions.



### Features and benefits

- Smaller blind box in the Perfect 130 system with the dimensions (W x H): 140 mm x 260 mm
- Spandrel glazing up to 2750 mm wide
- Zip Design Screen up to 4500 mm high

### Features and benefits

- Blind box with the dimensions (W x H): 140 mm x 300 mm
- Spandrel glazing up to 2750 mm wide
- External blinds up to 3100 mm high

### Features and benefits

- Blind box with the dimensions (W x H): 170 mm x 260 mm
- Spandrel glazing up to 2750 mm wide
- Roller shutters up to 2300 mm high

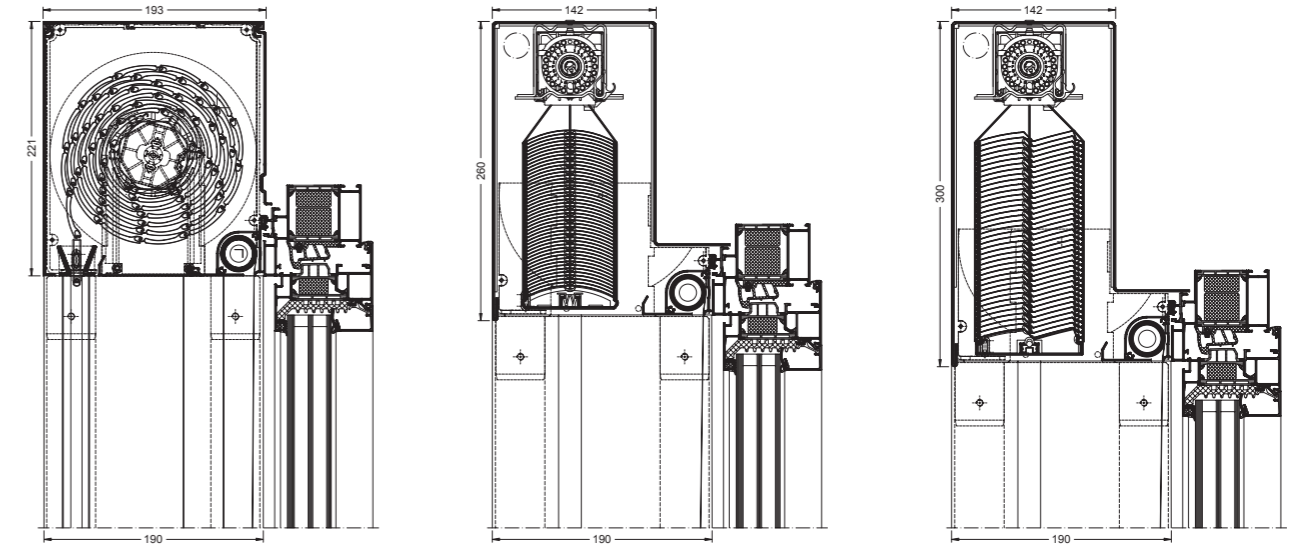
### Systems

### Perfect 130

Dimensions	
Maximum width of flyscreen with roller blind	1930 mm
Maximum height of flyscreen with roller blind	2400 mm
Maximum width of flyscreen with sliding pleated blind	2300 mm
Maximum height of flyscreen with sliding pleated blind	2950 mm
Maximum width of spandrel glazing	2750 mm
Maximum width of sun shading with external blind	3890 mm
Maximum height of sun shading with external blind	3100 mm
Maximum width of sun shading with roller shutter	2900 mm
Maximum height of sun shading with roller shutter	2300 mm
Maximum width of sun shading with Zip Design Screen	3890 mm
Maximum height of sun shading with Zip Design Screen	4500 mm

## Perfect 190 system

With a system basic depth of 190 mm, the Schüco Perfect 190 system is suitable for both normal and larger wall thicknesses.



### Features and benefits

- Blind box with the dimensions (W x H): 193 mm x 221 mm
- External blinds up to 3000 mm wide

### Features and benefits

- Blind box with the dimensions (W x H): 142 mm x 260 mm
- Rear insulation without recess in the building structure
- Zip Design Screen and roller shutters not possible

### Features and benefits

- Blind box with the dimensions (W x H): 142 mm x 300 mm
- Rear insulation without recess in the building structure
- Zip Design Screen and roller shutters not possible

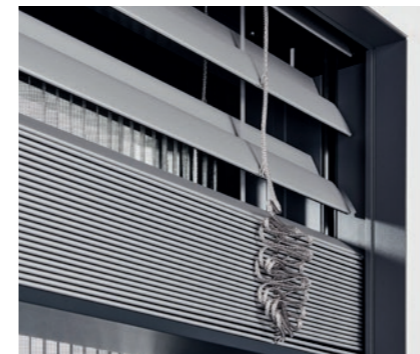
### Systems

### Perfect 190

Dimensions	
Maximum width of flyscreen with roller blind	1930 mm
Maximum height of flyscreen with roller blind	2400 mm
Maximum width of flyscreen with sliding pleated blind	2300 mm
Maximum height of flyscreen with sliding pleated blind	2950 mm
Maximum width of spandrel glazing	4000 mm
Maximum width of sun shading with external blind	5000 mm
Maximum height of sun shading with external blind	3400 mm
Maximum width of sun shading with roller shutter	2900 mm
Maximum height of sun shading with roller shutter	3000 mm
Maximum width of sun shading with Zip Design Screen	3890 mm
Maximum height of sun shading with Zip Design Screen	4500 mm

# Sun shading

Sun shading with external blind



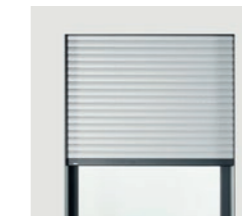
Sun shading with roller shutters



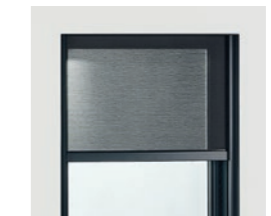
Sun shading with Zip Design Screen



Z-shaped louvre blades



Roller blind louvre blades



Sun shading fabric

Innovative sun shading systems combine architecture with summer thermal insulation. The purpose of summer thermal insulation is to allow the user to create comfortable climatic conditions and at the same time contribute towards the reduction or even prevention of energy being used for the cooling system. Summer thermal insulation makes a vital contribution towards the overall energy efficiency of a building and is a joint task for all those involved in the building project. Many countries have national regulations for summer thermal insulation. These regulations dictate the respective requirements during building planning. The aim of holistic planning is to combine the architectural design, the building technology and the building envelope with seamlessly integrated sun shading to create a harmonious concept.

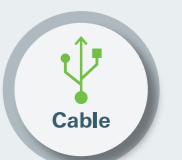
## Control via radio or cable

External blinds, roller shutters and Zip Design Screens from the Schüco Perfect system can be configured with motors connected via radio or cable. We would be happy to advise you on the choice of control system for your property.

Depending on the requirements and project type, two different systems can be used.

1. Radio-based control for residential buildings < 200 m<sup>2</sup>
2. Wired control for commercial projects

Smart time and sensor-controlled roller shutters, external blinds and Zip Design Screens react to the respective weather conditions and move automatically into the optimum position. This provides an essential contribution to energy saving: in summer, the room temperature can be reduced by up to seven degrees and, in winter, the solar radiation can be used as a natural source of additional heat.



## + Benefits

- Increase in living comfort
- Improvement in energy efficiency
- Summer thermal insulation

## Colour chart for external blind louvre blades

Thanks to their active louvre blades, the external blinds are an attractive alternative to conventional roller shutter systems if separate regulation of the daylight and heat entering the room is required. Louvre blades and component surfaces of the Schüco Perfect system units can be designed in the same uniform colour scheme and texture. A further advantage is that all external blind components can be adjusted, upgraded and replaced.



Colours may vary from illustrations

## Colour chart for roller shutter louvre blades

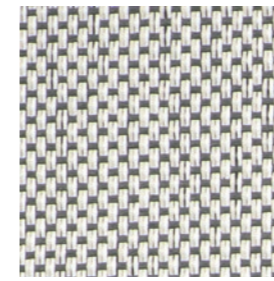
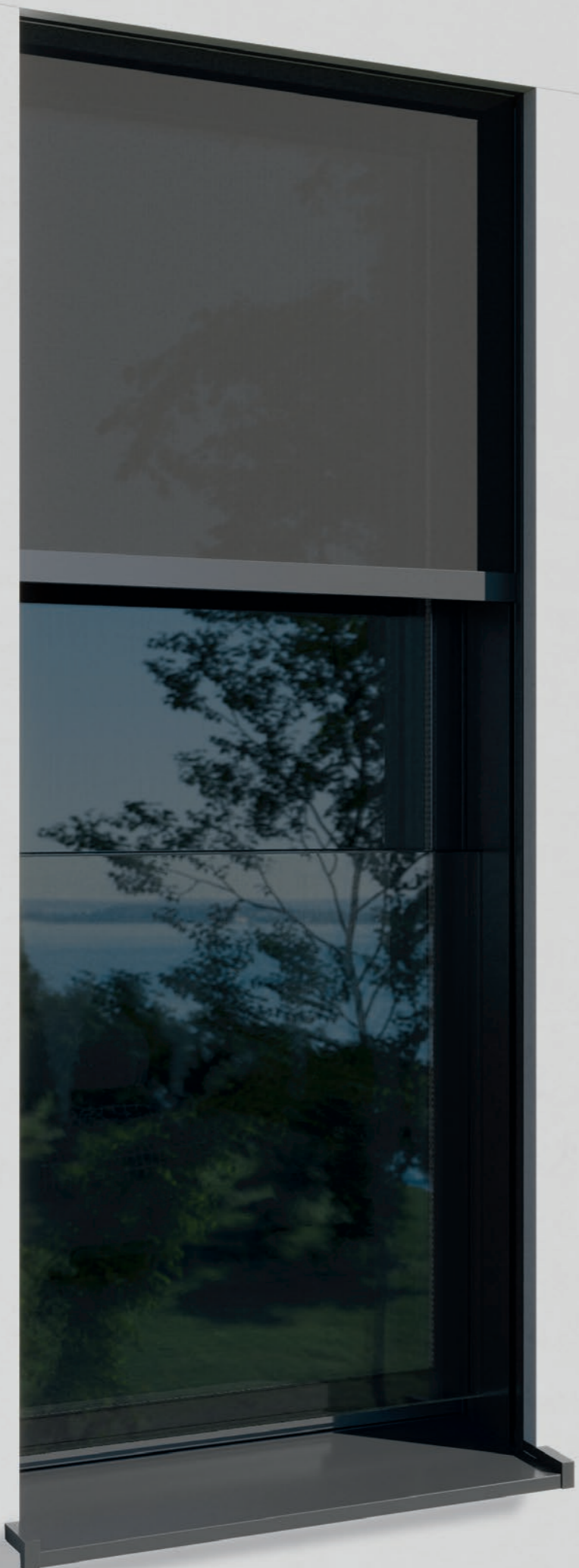
Roller shutters are real all-rounders: they allow infinitely variable dimming or complete darkening at any time of day, they act as thermal insulation in summer and keep the heat in the room during the colder seasons. In addition, all of the roller shutter components can be adjusted, upgraded and replaced.



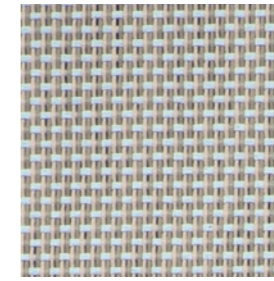
Colours may vary from illustrations

# Overview of textile fabric Soltis Veozip sun shading

with an openness factor of 5%



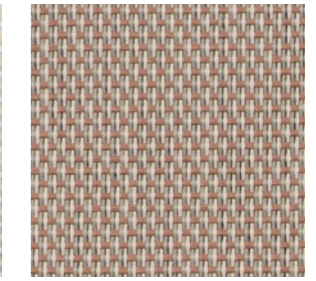
Frost white



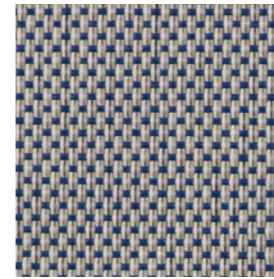
Edelweiss



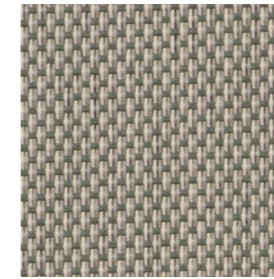
Cumulus



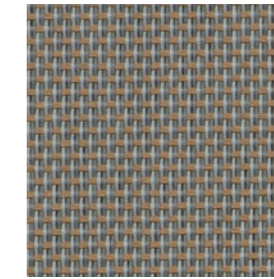
Natural



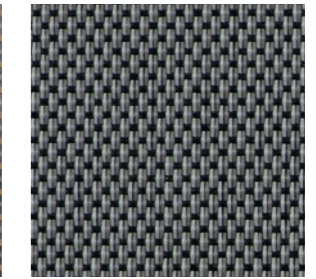
Macadamia



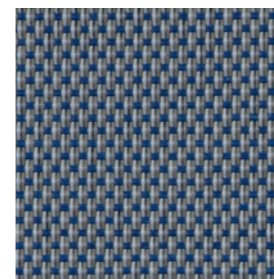
Mistral



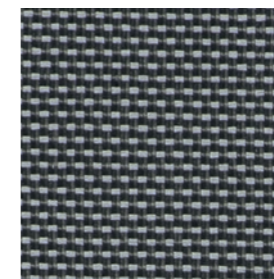
Tundra



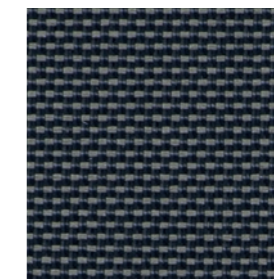
Moonscape



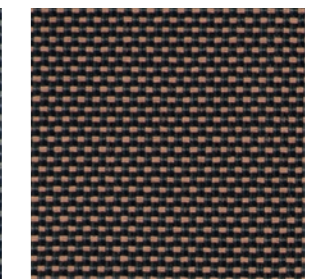
Sea lion



Sea urchin



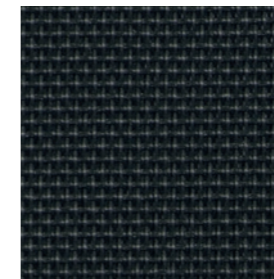
Shadow



Vulcan



Sandalwood



Grey pepper

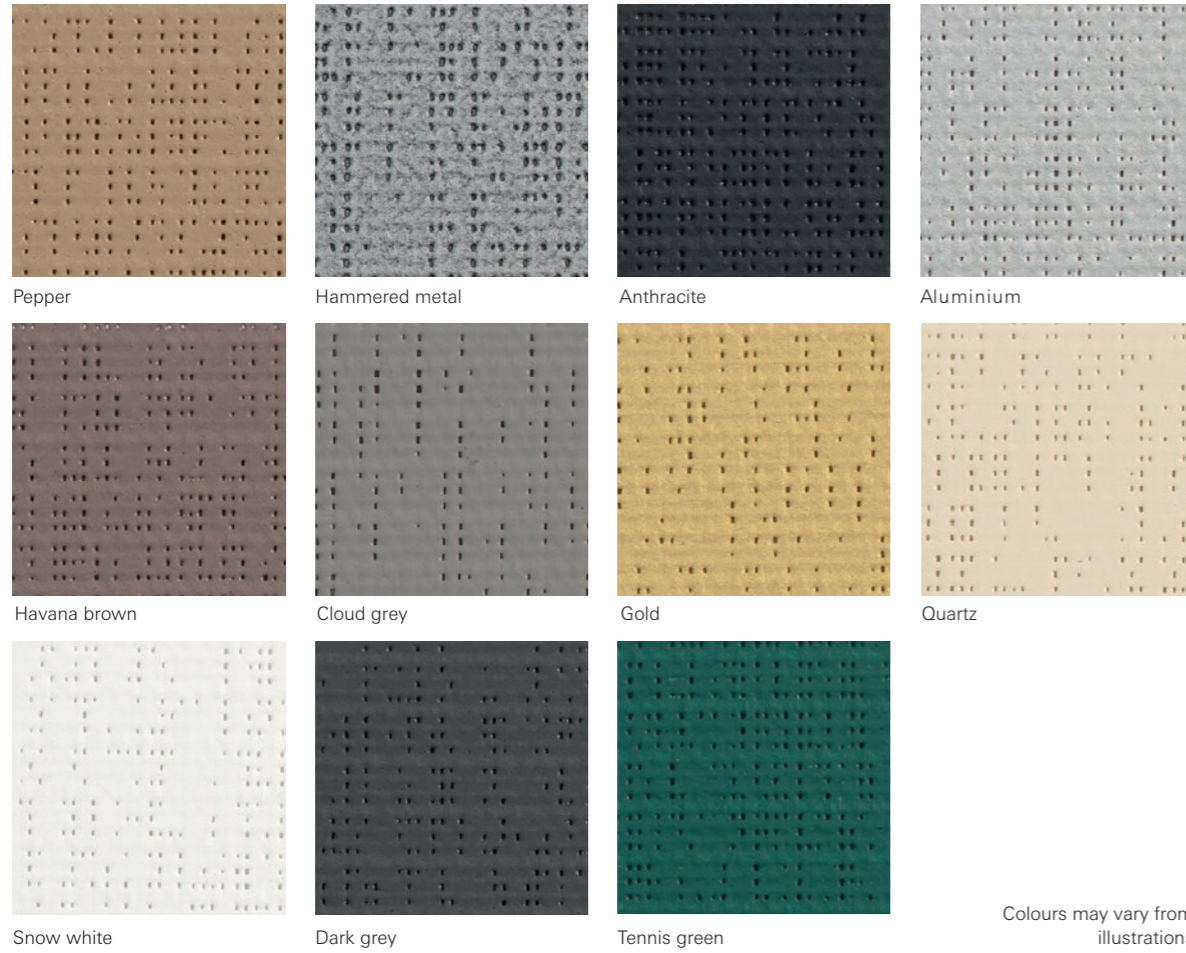


Graphite black

Colours may vary from illustrations

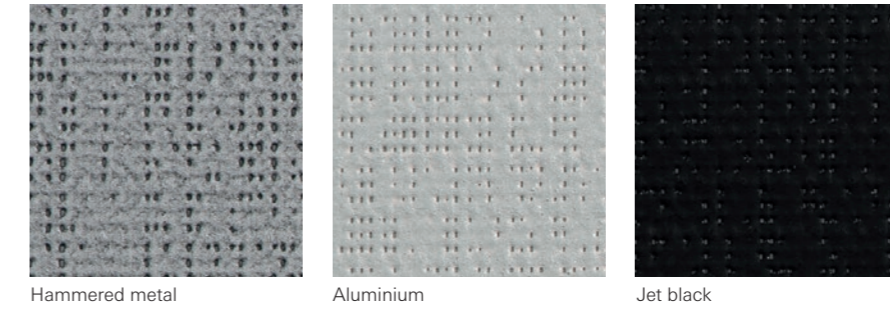
# Overview of textile fabric Soltis Perform 92 sun shading

with an openness factor of 4%



# Overview of textile fabric Soltis Opaque B92 sun shading

with an openness factor of 0% (blackout)





## Schüco International KG

[www.schueco.de/perfect](http://www.schueco.de/perfect)

### Schüco – system solutions for windows, doors and façades

Based in Bielefeld, the Schüco Group develops and sells system solutions for the building envelope made of aluminium, steel and PVC-U materials. The product portfolio includes window, door, façade, ventilation, security and sun shading systems, as well as intelligent networked solutions for residential and commercial projects. Schüco also provides consultancy and digital solutions for all phases of a building project – from the initial idea through to design, fabrication and installation, as well as after sales with maintenance and servicing. Fabrication machinery and customer-oriented service complement the product portfolio. As one of the leading companies in the construction industry, Schüco is committed to being a pioneer for comprehensive sustainability and to making an active contribution to climate neutrality and the circular economy within the construction sector through its products and services. Founded in 1951, Schüco is now active in more than 80 countries and achieved a turnover of 2.11 billion euros in 2023 with 6750 employees.

For more information, visit [www.schueco.com](http://www.schueco.com)

The "Schüco" logo and other logos are protected in Germany and various international markets. Detailed information is available on request.

Art. No. P4611/10.2024  
We reserve the right to make changes and to correct errors. Products may differ from illustrations.

# SCHÜCO